

## New OS datasets

The following summaries provide a brief description of each of the new OS datasets. For more information on these or any of your other data mapping enquiries please contact one of the Promap team at [customerservice@promap.co.uk](mailto:customerservice@promap.co.uk) or 0844 8449960



### OS MasterMap<sup>®</sup> Topography Layer

A large-scale digital database of the detailed surface features on the landscape, the OS MasterMap Topography Layer enables users to visualise the context of any feature or site, to pinpoint individual properties and precise sites when a high level of detail is required, and to assess the impact of a proposed development effectively and efficiently.



### OS MasterMap<sup>®</sup> Integrated Transport Network Layer

The Integrated Transport Network<sup>™</sup> (ITN) Layer of OS MasterMap provides a detailed overview of Great Britain's transport infrastructure. It is a single, common, multimodal dataset to meet business needs in every sector.



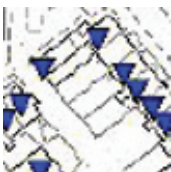
### OS MasterMap<sup>®</sup> Address Layer 2

OS MasterMap Address Layer2 provides precise coordinates for several million residential and commercial properties in Great Britain it provides the most accurate and up-to-date link between any property address and its location on the map.



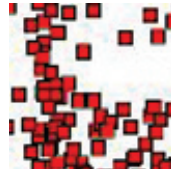
### OS VectorMap Local

OS VectorMap<sup>™</sup> Local is a national vector dataset supplied in Geography Markup Language (GML). It has been derived from OS Landplan data and has been generalised to view between scales of 1:3,000 to 1:20,000. OS VectorMap Local provides contextual data enabling businesses to add their own content and display for backdrop mapping.



### ADDRESS-POINT<sup>®</sup>

The ability to locate addresses using a geographic information system (GIS), ADDRESSPOINT defines and locates residential, business and public postal addresses in Great Britain. It matched digital information from Ordnance Survey with more than 25 million addresses recorded in Royal Mail's Postcode Address File (PAF<sup>®</sup>).



### Code-Point<sup>®</sup>

Code-Point locates postcodes rather than individual addresses using a GIS. It is created using geographic information from the OS ADDRESS-POINT product and covers both Great Britain and Northern Ireland.



### Code-Point<sup>®</sup> Polygons

Creates a set of boundaries that follow a consistent logic and portray the notional footprint of each postcode unit, enclosing every delivery address for which positional data of sufficient quality is available and following the major physical features that could reasonably be regarded as part of the postcode boundary.



### Land-Form PROFILE Plus<sup>™</sup>

A high accuracy, high resolution height dataset for use in modelling applications and prediction analysis, Land-Form PROFILE Plus is a powerful tool for civil engineers, planners and insurers. Potential applications include flood risk analysis, pipeline planning and noise mapping.



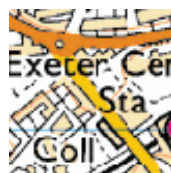
### Boundary-Line<sup>™</sup> & Land-Form PROFILE<sup>®</sup>

Ideal for any business application where height is an issue, such as flood risk assessment or environment impact analysis, Land-Form PROFILE is a 1:10 000 scale digital height dataset covering the whole of Great Britain. The dataset consists of contours at 5 metre intervals and DTMs (digital terrain models) with heightened points at 10 metre intervals.



### 1:10 000 Scale Raster

This provides a context against which analytical information can be displayed. It is available in colour or black and white in a range of formats to suit your needs.



### 1:25 000 Scale Colour Raster

Ideal for environmental analysis in rural areas, 1:25 000 Scale Colour Raster reflects the OS Explorer Map series. The specification of the dataset is in line with that of the printed maps, including valuable features such as contours, field boundaries and rights of way.



### OS Street View<sup>®</sup>

Street-level, backdrop map data specifically designed for use on your web site or Intranet, yet also very useful within a corporate GIS, OS Street View enables users to clearly visualise a wide range of information in a geographical context.



### Strategi<sup>®</sup>

Derived from 1:250 000 scale mapping, Strategi includes over 200 separate feature codes, all with attribution. It is highly suitable for planning purposes, trend analysis or creating simplified routing information.



### OS Locator

OS Locator is a fully searchable national gazetteer that should be used within a geographical information system (GIS) as a location and/or search tool. It complements Ordnance Survey's range of mid-scale raster map data products, 1:10 000 Scale Raster data, 1:25 000 Scale Raster and OS Street View<sup>®</sup>.



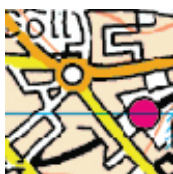
### Land-Form Panorama

Land-Form PANORAMA is a mid-scale product representing the physical three-dimensional shape of the surface of the ground. It is provided as two distinct datasets: A set of contours, spot heights, breaklines, coastlines, lakes, ridges and formlines in vector form (contours). A gridded digital terrain model with a 50-metre post spacing (DTM). The DTM has been derived from the contours, which were originally generated for 1:50,000 scale mapping. Land-Form PANORAMA is an unmaintained product. In some instances the landscape may have changed since its creation, for example, due to coastal erosion, highway construction or quarrying.



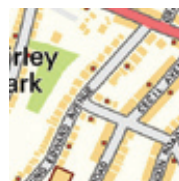
### 1:50 000 Scale Gazetteer

Key to providing map-based results against searches for places, whether within a GIS or a Web mapping application, the 1:50 000 Scale Gazetteer is a text file comprising some 250 000 names featured on Landranger<sup>®</sup> mapping.



### 1:50 000 Scale Colour Raster

Identical in presentation to the popular Landranger paper map series, 1:50 000 data is ideal for general purpose GIS uses or in web mapping applications. It provides clear details of roads, footpaths, woods, water features, important building and contour lines in a continuous map base of Great Britain.



### Code-Point Open

Code-Point Open provides a precise geographic location for each postcode unit in Great Britain. The product is a CSV file containing postcodes, grid references, NHSR health and regional health authority codes; administrative ward, district, county and country area codes. There are approximately 1.7 million postcode units in England, Scotland and Wales. Each postcode unit, such as SO16 4GU, contains an average of 15 adjoining addresses.



### 1:250 000 Scale Colour Raster

Ideal as backdrop mapping for business GIS applications or as mapping for the Web, 1:250 000 Scale Colour Raster includes all motorways and A and B roads, railways and other key features in a style that is very easy to read. Also supplied is an index of place names (gazetteer) to help you find names and locations.



### VectorMap District

OS VectorMap District is a mid-scale digital raster and vector mapping product giving a district-level view. It clearly shows the landscape features relevant to its level of detail, including generalised buildings, roads, railways, landscape features, boundaries and rivers. OS VectorMap District is a new product being issued as an alpha release under OS OpenData. It has been designed for viewing either as a map on its own or as a context backdrop to your own data, which can be overlaid using a GIS. OS VectorMap District is available in two formats: raster and vector.



### Meridian<sup>™</sup> 2

A vector data product, Meridian 2 is ideal for marketing and environmental analysis. It is supplied in two themes that can be bought either separately or together as a complete dataset.



### Miniscale<sup>®</sup>

If you are developing a Web or graphic application that requires, clean, uncluttered mapping depicting roads, railways, towns and rivers, consider MiniScale. It is our smallest digital map dataset, produced at a nominal scale of 1:1 000 000.